

Silent series

interpreter booths

The highest ISO standards and requirements as requested by users have resulted in the Audipack "Silent Series" interpreter booths. The Silent Series consists of three versions: Silent 6300, Silent 9600 and 9700 series. All versions are fully transportable in optional flightcases.



Audipack®

It's great to have solutions...

The **Silent Series** are **easy and quick to install**



- ▲ **ISO 4043:2016 (latest version) approved**
- ▲ **Panoramic view windows**
- ▲ **Advanced cable management**
- ▲ **Quick installation**

For effective interpretation, silence is required.

The best solution is an Audipack interpreter booth.

In developing these booths, Audipack has paid full attention to a number of requirements e.g. flexibility, weight, good looks, high-quality materials, ease of use and durability. The scratch resistant surface combined with anodised aluminium frame, gives an attractive and professional appearance.

The Silent Series are easy and fast to install.

One person can do the job.

All elements and panels are interchangeable, so there is no difficulty in adapting the construction to local conditions. Even the door can be placed on any side. The roof elements are connected to each other in the same way as the wall, resulting in a safe and solid construction.

Silent 9600 and 9700 series interpreter booths comply with the ISO 4043:2016 standard. Silent 6300 complies with ISO 4043:1998.

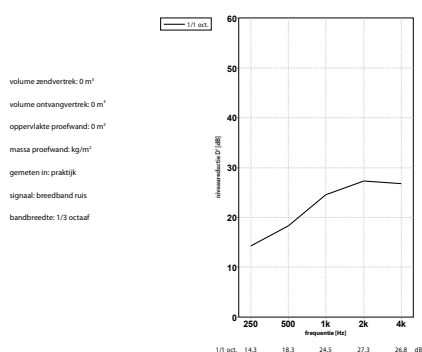
For more information, ask for our Silent Series brochure.



9600 SILENT SERIES, ISO 4043:2016, INTERPRETER BOOTH



Silent series sound insulation capacity



Ref.

External dimensions in mm
 Internal dimensions
 Weight incl. safety glass and table
 Colour exterior

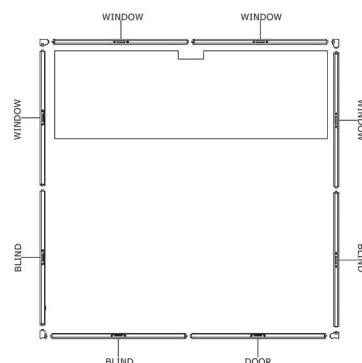
Colour interior
 Sound insulation capacity
 Number of booth parts incl. table
 Table dimensions in mm
 Ventilation
 Lights
 Door

P4600

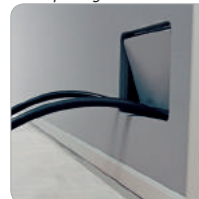
W 1682 x D 1682 x H 2041 excl. ventilation
 W 1600 x D 1600 x H 2000
 210 Kg
 Light grey (approx. RAL 7042)
 Other colours available on request
 Dark grey and white
 Better than ISO 4043:2016
 11
 1600 x 500
 Ventilation B2, detachable (height: 170 mm)
 LED light*
 Option to either place the door at the left, right or at the back side of the cabin



* Also available with ventilation B and without LED light: **P4601**



Cable passage



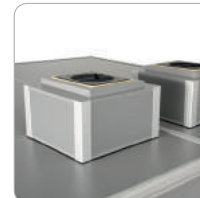
LED light



Table



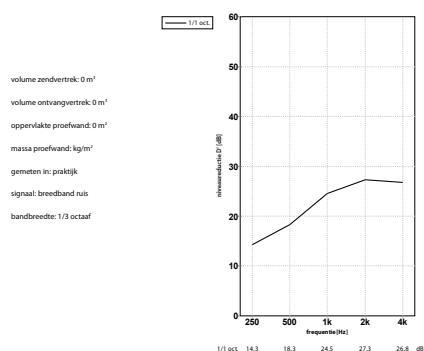
Ventilation



9700 SILENT SERIES, ISO 4043:2016, COMPACT IN TRANSPORT



Silent series sound insulation capacity



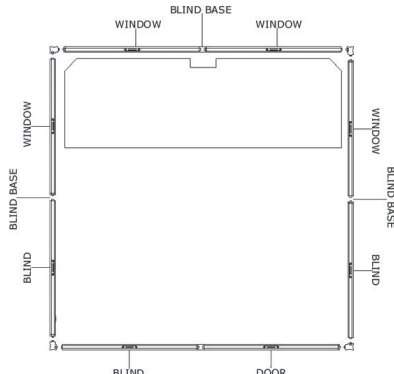
Ref.

External dimensions in mm
 Internal dimensions
 Weight incl. safety glass and table
 Colour exterior

Colour interior
 Sound insulation capacity
 Number of booth parts incl. table
 Table dimensions in mm
 Including floor
 Ventilation
 Lights
 Door

P4602

W 1682 x D 1682 x H 2041 excl. ventilation
 W 1600 x D 1600 x H 2000
 210 Kg
 Light grey (approx. RAL 7042)
 Other colours available on request
 Dark grey and white
 Better than ISO 4043:2016
 16
 1600 x 500
 no
 Ventilation B2, detachable (height: 170 mm)
 LED light*
 Option to either place the door at the left, right or at the back side of the cabin



Cable passage



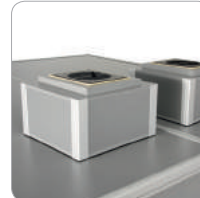
LED light



Table



Ventilation



6300 SILENT SERIES, ISO 4043:1998



Ref.

External dimensions in mm

Internal dimensions

Weight incl. safety glass and table

Colour

Sound insulation capacity

Number of booth parts incl. table and floor

Table dimensions in mm

Including floor

Ventilation

Optional

* DIN 56924 approved only when the optional double glass is mounted

P1483

W 1720 x D 1720 x H 2280

incl. ventilation and adjustable feet

W 1600 x D 1600 x H 2000

340 Kg

Light grey (approx. RAL 7042)

Other colours available on request

Better than ISO 4043:1998

According DIN 56924*

13

1600 x 500

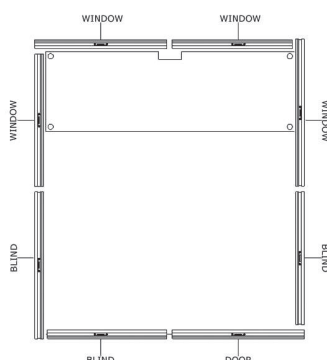
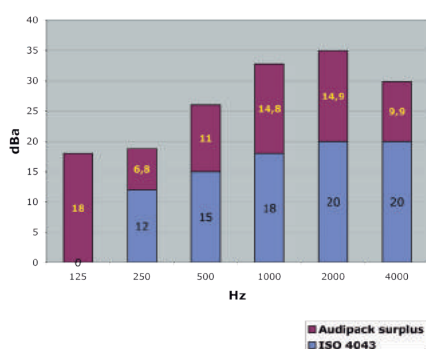
yes

Included

Extension sets to 3 or 4 person booth



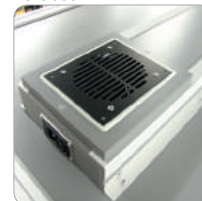
Silent series sound insulation capacity - ISO 4043:1998



Adjustable feet



Ventilation A



Rear view



Cable passage



9300 SILENT SERIES, 1 PERSON BOOTH

Ref.

Type

External dimensions in mm

Weight incl. safety glass and table

P4019

1 person booth

W 814 x D 1682 x H 2041 excl. ventilation

150 Kg

ACCESSORIES

FLIGHTCASES

Transport your interpreter booth nice and safe in a Audipack flightcase.



Ref.

Suitable for Booth
Description

5604+5887

6300
Set of 2

15645

9600
Front loader

17495

9300 1 person (P4019)
Front loader

8969

9700
Front loader (standing model)

ASSEMBLY AID



Ref.

P1866